

Student's GUIDE



Content

Welcome from the LMTA Rector	03	Studies	15
About LMTA	04	Financing Your Studies	17
Structure	05	Opportunities for International Studies	18
Art and Research	06	Edina, LMTA Information System for Studies	19
Vision and Values	06	Grants and Support	20
Academic Ethics	06	Library	22
Equal Opportunities	07	Spaces for Art Activities	24
Go Green Academy	08	Your Career	26
Faculties and Departments	09	Student Accommodation	28
Student Account	11	Students' Union	29
Student Account Features	12	Accessories	31
Student ID Card	13	Student Support	32
Discounts for LMTA Students	14	Academic Calendar	34

WELCOME FROM THE LMTA *Rector*



Dear first-year students,

Welcome to the largest music, theatre, film, and dance university in the Baltic States! We're excited about every new student joining our community. I hope that at the Lithuanian Academy of Music and Theatre you will meet a lot of inspiring personalities – teachers and students who will encourage you to discover your own path in life. I wish you to successfully overcome all the challenges and responsibly use all the opportunities offered by the LMTA. Here together we learn to discover and create art relevant to the world of tomorrow.

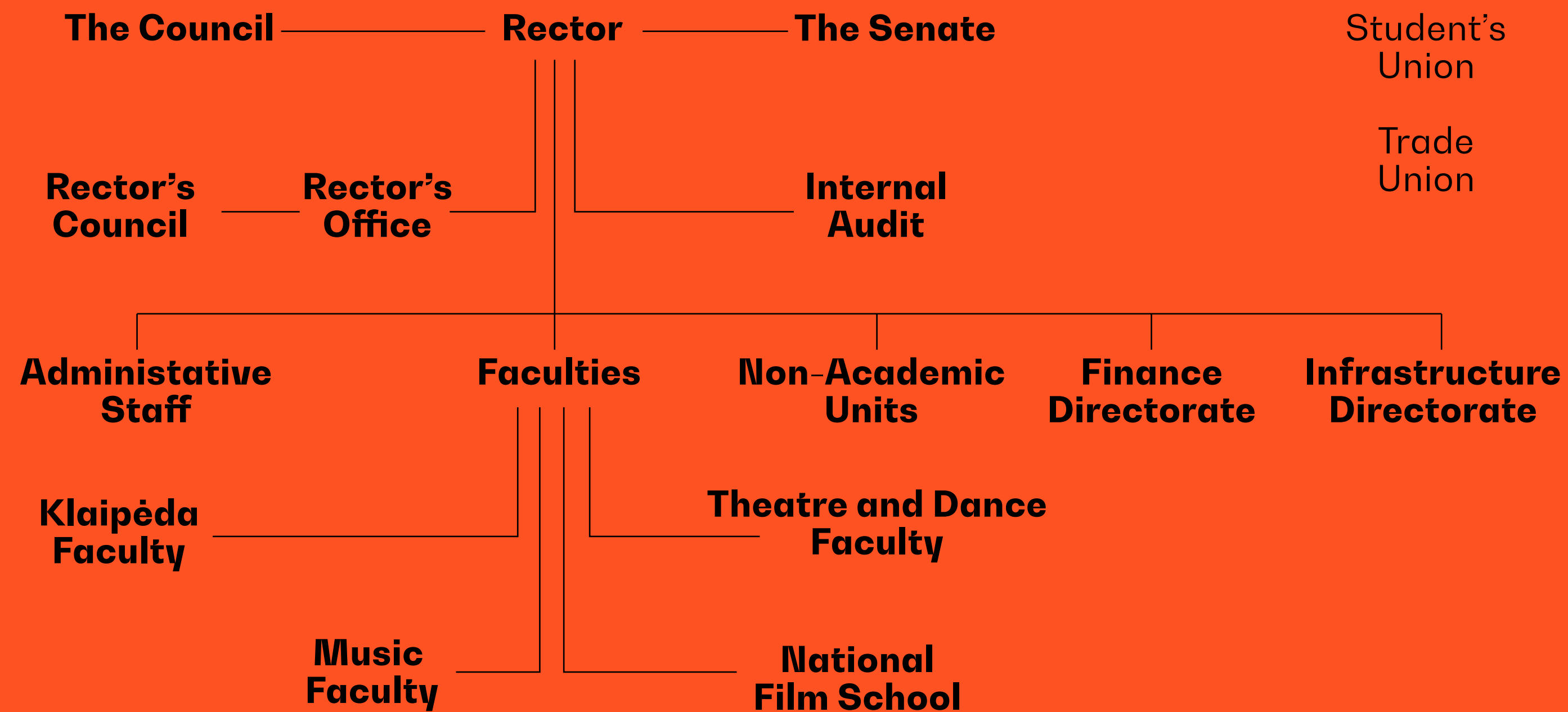
Assoc. Prof. Dr. **Judita Žukienė**
Rector of the Lithuanian Academy of Music and Theatre

THE LITHUANIAN ACADEMY OF MUSIC AND THEATRE

The Lithuanian Academy of Music and Theatre (**LMTA**) is a specialised art university whose mission is to ensure sustainable art and research activities, participate in the formation of Lithuania's policy of art education and culture, foster the spiritual harmony and national identity of the society, and educate young people with the most talent for art – young people who are creative, proactive, business-minded, and open to Lithuania and the whole world. In **Vilnius** and **Klaipėda**, the LMTA offers studies in music, theatre, film, dance, and art criticism as well as art and research activity in these fields. The LMTA has a staff body of about **500** and over **1,000 students**. Every year, about **100 foreign professionals** arrive at the Academy to give lectures and workshops.



Structure



Student's
Union

Trade
Union

- The Academy is governed by two collegial bodies, the Council and the Senate.
- Rector is the head of the LMTA who acts on the behalf of the Academy and represents it.
- Vice-Rector is Deputy Rector of the LMTA.
- The LMTA has four faculties, an administrative unit, and other departments related to studies, arts, and research.
- The faculties have units – departments – responsible for conducting studies.

ART AND RESEARCH

On average, the LMTA annually holds over **400–500 public art events**: about **350 concerts**, **100 theatre** and dance performances, and **20 film** screenings. Most of these events are free of charge and open to Vilnius residents and other guests of the city. Works by the Academy's researchers are published in three LMTA research journals. Annually, the LMTA hosts around **10 conferences** and **publishes** several **monographs** and other research publications.

VISION AND VALUES

VISION

An open and creative academic art and research community that inspires cultural breakthroughs and creates value.

VALUES

- Openness and sustainability
- Creativity
- Identity
- Academic freedom
- Responsibility and tolerance
- Equal opportunities for all
- Integrity of the community

ACADEMIC ETHICS

The activities of the LMTA academic community members are rooted in the principles of academic ethics: academic freedom, academic integrity, responsibility, collegiality and respect. As members of the LMTA community, students must cherish the principles of academic integrity.

The LMTA's Code of Academic Ethics establishes the principle of respect for intellectual property, according to which there is no tolerance of any form of academic misconduct (plagiarism; falsification of scientific data; discrepancies in the allocation of credit to coauthors who are younger

colleagues or subordinates; denial or non-acknowledgement of the contribution made by persons or organizations that have assisted the artistic, research, and social activity; copyright infringement; cheating at examinations and other tests; or other dishonest behaviour).

The regulations on academic ethics are outlined **in the LMTA's Code of Academic Ethics**. Cases of alleged violations of the LMTA's Code of Academic Ethics are to be re-ported by e-mail etika@lmta.lt or submitted in writing to the Chairperson of the LMTA Ethics Committee.

Equal OPPORTUNITIES

ANY LMTA EMPLOYEE OR STUDENT WHO BELIEVES THAT THEIR EQUAL OPPORTUNITIES HAVE BEEN VIOLATED OR THAT THEY SUFFER FROM DISCRIMINATION HAVE THE RIGHT TO CONTACT THE LMTA ETHICS COMMITTEE BY E-MAIL ETIKA@LMTA.LT AND REFER TO A PERSON WHO HAS ALLEGEDLY VIOLATED THEIR RIGHTS OR DISCRIMINATED THEM.

The Academy follows **the LMTA Policy of Equal Opportunities, Inclusion, and Diversity**, the purpose of which is to ensure that all the LMTA activities comply with the principle of equal opportunities and the prohibition of restricting the rights of employees and students or granting privileges to them.

The LMTA seeks the compliance with the principles of equal opportunities, inclusion, and diversity in all areas of activity:

The LMTA recognises that every single person is individual and that the contribution and participation of each person – an employee or a student – in the activities of the LMTA community is equally important. The LMTA organises its activities so that all social groups are represented in its community and each member of the community feels respected and can

perform to the best of their abilities.

The LMTA creates a community culture where differences are not only acceptable but appreciated; where everyone can work, study, develop, and express themselves. Individuals with fewer opportunities receive support to overcome obstacles and become involved in the activities.

The LMTA complies with the principle of equal opportunities, prohibits restriction of the students' and the employees' rights, grant of privileges to them, or discrimination based on gender, race, nationality, language, origin, social status, belief, convictions or views, age, sexual orientation, disability, ethnic origin, or religion, as well as discrimination on the basis of health status and different educational, cultural, economic, or geographical background.



Go Green ACADEMY



Climate change and increasing environmental degradation pose an existential threat to the world. The LMTA encourages students not to stay indifferent and use the available resources in a responsible way: **turn off the lights** when leaving the room; **avoid printing** if there's a possibility to make a digital copy of the document; **sort waste** materials by placing them in the designated containers at the LMTA premises.

Faculties

MUSIC FACULTY

THEATRE AND DANCE FACULTY

NATIONAL FILM SCHOOL

KLAIPĖDA FACULTY



MUSIC FACULTY

Department of Accordion
Department of Choir Conducting
Department of Vocal Performance
Department of Conducting
Department of Jazz
Department of Educology
Department of Ethnomusicology
Department of Piano and Organ
Department of Chamber Ensemble
Department of Composition
Department of Accompaniment
Department of Folk Instruments
Department of Musicology
Department of Wind and Percussion Instruments
Department of String Instruments

Dean
dr. Linas Balandis
Assistant to the Dean
Gabija Maknavičiūtė-Janavičienė
Administrators
Asta Vaitkevičiūtė-Skliutė
Rasa Dzimidaitė-Mankauskienė



LMTA Building 2
(Vilniaus St. 6-2, Vilnius)
Phone: +370 526 28537
E-mail: mf@lmta.lt
Rooms: 2216, 2218, 2220

THEATRE AND DANCE FACULTY

Department of History and Theory of Art
Art Management Division
Department of Dance and Movement
Department of Acting and Directing

Dean
ILONA BALSYTĖ
Administrator
Kristina Kazilionienė



Study Campus
(Olandų St. 21A, Vilnius)
Phone: +370 526 12028
E-mail: tkf@lmta.lt
Rooms: 206, 207, 208

NATIONAL FILM SCHOOL

Film and Media Centre
Film Studio

Head of LMTA National Film School
VYTAUTAS DAMBRAUSKAS
Administrator
Miglė Levickienė



Study Campus
(Olandų St. 21A)
Phone: +370 690 37512
kinas@lmta.lt
Rooms: K201, K202

KLAIPĖDA FACULTY

Department of Music
Department of Dance
Department of Theatre

Dean
LORETA JONAVIČIENĖ
Assistant to the Dean
Jolanta Brazdeikytė



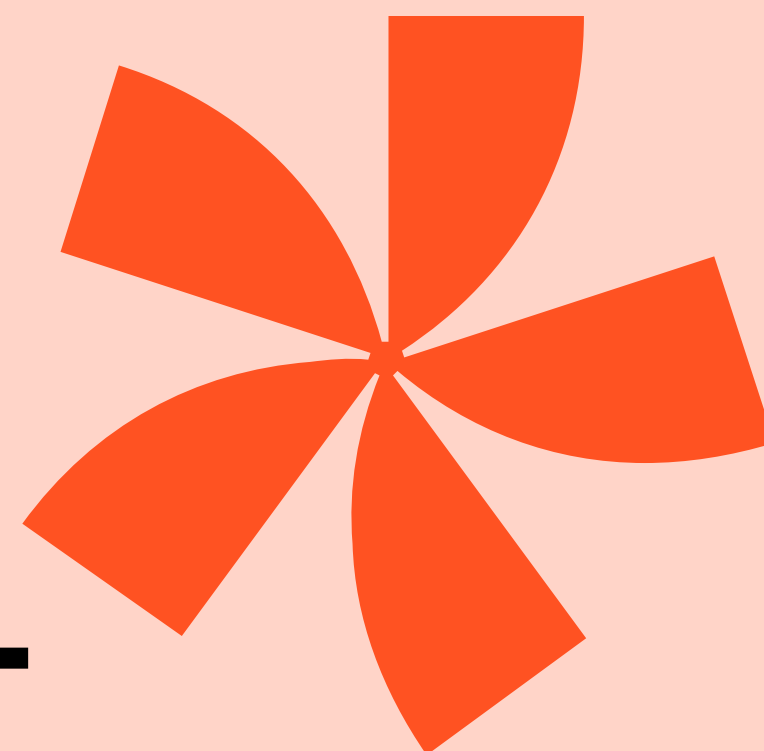
LMTA Klaipėda Faculty
(K. Donelaičio ST.. 4, Klaipėda)
Phone: +370 462 46302
E-mail: kf@lmta.lt
Rooms 214 and 326

STUDENT Account

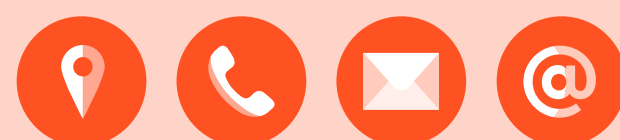


Each student at the Lithuanian Academy of Music and Theatre has a personal account at **name.lastname@stud.lmta.lt**. The account grants exclusive rights to access the LMTA electronic services. To log in to your account, go to **<https://mail.lmta.lt>**. You can find the account password in your personal e-mail inbox you specified when filling the application documents.

LMTA STUDENT ACCOUNT



Features



IT-related information

pagalba.lmta.lt / pagalba@lmta.lt

+370 526 10028

Mon-Fri 8AM–5PM

Video surveillance-related information

vaizdostebejimas@lmta.lt

+370 682 07816

Mon-Fri 8AM–5PM

* **A personal 100-GB e-mail inbox:**

Here you'll receive messages from Dean's Office and the most important information related to your studies. You'll also use this e-mail for communication with your teachers.

* A possibility to print and make copies of documents in a high-quality format at non-commercial prices in all LMTA buildings, faculties, or departments.

More information: <https://biblioteka.lmta.lt/en/services/copying-printing-scanning/>.

* Access to **Windows 11 Enterprise software**.

* **A Minecraft Education game license** (by logging in with LMTA student account credentials).

* A possibility to share very large files (up to 100 GB) at <https://filesender.vu.lt/> (when logging in to the system, select "The Lit-huanian Academy of Music and Theatre" in the field "institution").

* **Microsoft OneDrive** cloud storage with a capacity of **1024 GB** or **1 TB** to make sure your important data never disappears.

* Use your phone for the two-factor authentication (2FA) ensuring the security of the account. To make the login process more convenient, we recommend using the free application **Microsoft Authenticator** which you can find in **Google Play** and **Apple Store**.

* Access to the major **Microsoft Office 365** applications in the browser (*Word, Excel, Powerpoint, Outlook, Calendar, OneDrive, Teams, Forms, OneNote, Visio, Sway* and others).

* A possibility to contact all LMTA students, teachers, and administrative staff using *Microsoft Teams* and *Outlook*.

* The exclusive opportunity to use eduroam, an international wireless network of academic institutions, available at the LMTA and universities in many countries around the world.

STUDENT

ID Card



To be referred to as a student, you must have a student ID card. At the moment, you can choose from either the **Lithuanian Student Identity Card (in Lithuanian, LSP)** or the **International Student Identity Card (ISIC)**. Both ID cards:

- confirm your status as a student;
- provide discounts for students including public transport discounts;
- grant access to multiple LMTA services;
- allow to use integrated public transport ticketing.

To receive the Lithuanian Student Identity Card (LSP), sign up at www.lsp.lt. If you want to get the International Student Identity Card (ISIC), go to www.isic.lt.

Discounts

FOR LMTA STUDENTS

TRANSPORT:

Public transport fare discounts:

80% on personal fixed-term monthly tickets,

50% on one-time tickets (Vilnius, Kaunas, Klaipėda, Šiauliai, and Panevėžys)

50 % off intercity transport fare

50% discount on train ticket fare

SERVICES AND ENTERTAINMENT:

25% discount off the price for the performances at the Lithuanian National Drama Theatre for persons under 25. LMTA students in Theatre and theatre-

related programmes are admitted to repertory performances free of charge;

10–20% discount on the tickets for the Youth Theatre performances;

15% discount on the tickets for repertory performances at the State Small Theatre of Vilnius;

15% discount on the tickets for the Vilnius Old Theatre performances;

50% discount on the entry ticket to 11 expositional locations of the National Museum of Lithuania;

50% discount on the ticket for repertory performances at Klaipėda Drama Theatre;

LMTA STUDENTS WHO HAVE THE LITHUANIAN STUDENT IDENTITY CARD (LSP) ARE ELIGIBLE FOR THE FOLLOWING DISCOUNTS:

50% discount on the entry to the Lithuanian Sea Museum;

50% discount on the entry to the Lithuanian Museum of Ethnocosmology;

60% discount on the entry to the Lithuanian Museum of Theatre, Music and Cinema;

50% discount on the entry to the Trakai History Museum;

50% discount on the entry to the Open-Air Museum of Lithuania;

50% discount on the entry to the Lithuanian Sports Museum;

50% discount on the entry to the Vytautas the Great War Museum;

50% discount on the entry to the Energy and Technology Museum;

~30% discount on the entry to the Museum of Illusions;

50% discount on the entry to the MO Museum;

20% discount on Joglė cleaning services;

10% discount on standard entry tickets to the Vichy Water Park;

25% discount on eyeglass frames and sunglasses at Optikos Pasaulis;

15% discount on eyeglass care products and accessories and other products. Additional terms may apply.

5% discount on iDeal Mac and iPad;

15% discount on most laboratory tests at Antėja healthcare laboratory on Thursdays;

a special offer for sending parcels via **LP EXPRESS** self-service terminals.

Studies



FIRST-CYCLE STUDIES

SECOND-CYCLE STUDIES

THIRD-CYCLE STUDIES

STU DIES

THE LMTA SPECIALISES IN MUSIC, THEATRE, FILM, DANCE, AND ART CRITICISM OFFERING THREE-CYCLE STUDIES. NOW THE LMTA IS THE ONLY INSTITUTION IN LITHUANIA THAT PROVIDES UNIVERSITY-LEVEL STUDIES IN THE FIELDS OF FILM AND DANCE, AND ART DOCTORATE PROGRAMMES IN THE FIELDS OF MUSIC, THEATRE, AND FILM.

FIRST-CYCLE STUDIES

The first-cycle (bachelor's) study programmes aim at broadening general knowledge, acquiring theoretical basics of the field of study, and gaining professional skills necessary for independent work. These study programmes are oriented towards comprehensive education, acquiring theoretical knowledge and the highest level of professional skills. Students who have completed first-cycle university studies are awarded a **bachelor's degree**, which allows them to engage in professional activities and / or continue studies in a master's study programme.

THE TOTAL VOLUME OF STUDIES IS **240 CREDITS***. THE VOLUME OF ONE SEMESTER IS **30 CREDITS***.

SECOND-CYCLE STUDIES

Second-cycle (master's) study programmes are intended to prepare for independent work in the fields of art or research or other kind of work that requires research-based knowledge and artistic, creative, and analytical skills. Students who have completed second-cycle studies are awarded a **master's degree** allowing them to engage in professional activities and / or continue studies at the doctorate level.

THE TOTAL VOLUME OF STUDIES IS **120 CREDITS***. THE VOLUME OF ONE SEMESTER IS **30 CREDITS***.

THIRD-CYCLE STUDIES

Third-cycle studies at the LMTA are offered as the art doctorate and PhD studies. The art doctorate aims at training an artist and researcher who can create, interpret, and develop research based on art practice. Students who have defended their artistic research project are awarded a **doctoral degree in art**. The purpose of PhD studies is to prepare a researcher who can independently conduct research and experimental (social, cultural) development work, and solve scientific problems. Students who have defended the thesis are awarded a PhD.

THE TOTAL VOLUME OF STUDIES IS **240 CREDITS***. THE VOLUME OF ONE SEMESTER IS **30 CREDITS***.

*Study credit – a unit of the volume of studies. It measures average workload of the student required to achieve the learning outcomes. At the LMTA, one credit equals 26.66 hours of the student's work and consists of contact (classroom) hours and independent work time. More information about study credits is provided in **the LMTA Regulations for Studies**.

ADMINISTRATION OF STUDIES

The study process is administered by the staff of the faculties: deans, faculty administrators, heads and coordinators of departments.

CALENDAR AND TIMETABLES

Students can find the calendar and class timetables of their study programme (specialisation) on the LMTA website under the information published by the faculty.

- **MUSIC FACULTY**
- **THEATRE AND DANCE FACULTY**
- **NATIONAL FILM SCHOOL**
- **KLAIPĖDA FACULTY**

SUSPENSION, TERMINATION, AND RESUMPTION OF STUDIES

If you have considered to suspend (go on academic leave), terminate, or resume studies, please contact Dean's Office of your faculty. More information can be found in the LMTA Regulations for Studies.

SURVEYS

To receive feedback, the LMTA periodically conducts stakeholder surveys, so you are invited to actively participate in them.

Participation in surveys is voluntary and anonymous. The results of the surveys are used to update the curriculum, evaluate the teachers' performance, or review and update the study programme. The overall results of the surveys are discussed at meetings held by the Rectorate, deans, and departments. More information about surveys can be found at <https://lmta.lt/lt/kokybe/apklausos/>.

FINANCING YOUR STUDIES

The LMTA has students whose studies are statefunded and those who finance their studies on their own.

Students whose first-cycle studies are statefunded continue receiving the state funding only if they meet the set achievement criteria after the assessment period established by the LMTA. If a student fails to meet the criteria of good academic achievements, they become deprived of state funding.

A student who has lost state funding must pay a fixed tuition fee for their studies, while the vacant state-funded place, in accordance with the procedure established by the LMTA, is taken by a student whose studies are not funded by the state and who has demonstrated the best academic achievements in the same field of studies and in the same course and meets the set learning performance criteria. The state-funded and non-statefunded places are ranked in accordance with the procedure established by the LMTA. For more information on study funding, see **the LMTA Academic Progress Policy**.



OPPORTUNITIES FOR *International* STUDIES



Whatever study cycle you are in (bachelor's, master's, or doctoral studies), the LMTA provides numerous opportunities for studies or a traineeship under the Erasmus+ exchange programme. Studies within Erasmus+ last from three to twelve months, while the duration of a traineeship is two months. To study under Erasmus+, you have to choose a foreign university with which the **LMTA has signed a bilateral agreement.**

LMTA also offers Erasmus Mundus Joint Master programmes – **ReSound** and **DocNomadsPlus**. These programmes are carried out together with leading European universities and give students the opportunity to study in several countries and obtain a joined degree.

It is allowed to study abroad more than once, but priority is given to students who have not yet participated in the Erasmus+ exchange programme. Students who participate in the Erasmus+ are awarded a grant. More information about grants and their rates is here: **LMTA | Erasmus studies.**

HOW TO PARTICIPATE?

The selection of students for the Erasmus+ exchange programme takes place from **1 to 30 November**. The Erasmus+ traineeships take place on **October 1-31, January 1-31, March 1-31, and May 1-31**. More information about participation in the Erasmus+ exchange programme is here: **LMTA | Erasmus Traineeship**

The list of partner institutions is here: **LMTA | Erasmus partner institutions**



If you have questions, e-mail **erasmus@lmta.lt**



LMTA Erasmus+



INFORMATION SYSTEM FOR STUDIES

WHAT IS EDINA?

After logging into the system, you will be able to:

- View the requirements of the study program (specialisation) and track your progress;
- See the current semester's classes;
- Review the grades for your courses (modules) after the exam session ends;
- View the credited courses (modules);
- Communicate with lecturers and access other information uploaded to **EDINA**.

HOW TO LOG IN?

You can log in to **EDINA**, the LMTA information system for studies, at <https://stud.edina.lt/>.

STEPS TO TAKE:

- Select the language and click “Login”.
- Under the name of university, choose “Lithuanian Academy of Music and Theatre”.
- Log in with your personal LMTA e-mail address and password.
- If you don't have an LMTA e-mail address or forgot your password, send an e-mail to pagalba@lmta.lt.
- If you fail to login to the system, please inform by sending an e-mail to edina@lmta.lt.

GRANTS AND *Support*

20

LMTA MERIT-BASED INCENTIVES

TUITION FEE REDUCTION

STATE FINANCIAL SUPPORT

LMTA MERIT-BASED INCENTIVES

An incentive grant (paid multiple times or once) is awarded to state-funded first- or second-cycle students to recognise their exceptional academic achievements, active artistic activity (participation in competitions, festivals, creative projects and / or managerial activity), research, and social activity.

More information about incentive grants can be found in the [LMTA Regulations for Merit-Based Grants](#).

Well-performing first and second-cycle students whose studies are not financed by the state are incentivised by the tuition fee reduction in accordance with the Description of the Procedure for Tuition Fee Payment, Refund, and Recovery at the Lithuanian Academy of Music and Theatre approved by the Senate (VII, 48.).

TUITION FEE REDUCTION

LMTA students whose studies are not funded by the state can receive reduction on the fee for the semester of study. For a reduction in tuition fees, please contact the Study Department via email studijos@lmta.lt.

STATE FINANCIAL SUPPORT

- **State loans.** LMTA students can receive state loans to pay tuition fee, as well as cover living expenses or tuition fee for part-time studies.

- **Social grants.** Social grants are available to all LMTA first-, second-, and third-cycle students as long as they meet the established criteria.

- **Reimbursement of the tuition fee.** First and second-cycle students whose whole study period or its part (a semester) has not been funded by the state are eligible for reimbursement of the tuition fee. The tuition fee is reimbursed to students who have completed one year of studies and demonstrated exceptional academic achievements.

- **Reimbursement of the tuition fee for students who have completed military service.** The students who have completed permanent compulsory military service or basic military training and meet the established

criteria are eligible for partial reimbursement of the tuition fee.

- **Support for Lithuanian expatriates.** The State Studies Foundation provides support to Lithuanian expats studying at the LMTA.

- **Support for people with disabilities.** Students with disabilities can get a targeted allowance to meet their special needs. If a student's studies are not state-funded, they can receive an allowance for partial reimbursement of the tuition fee. The LMTA Community Wellbeing Centre takes care of and provides advice to students with disabilities via email bgc@lmta.lt

More information is available at www.vsf.lrv.lt, [LMTA](#) | [Neįgaliesiems](#).

Library

A woman with short dark hair and bangs is shown from the chest up, holding a large stack of books. She is looking off to the side with a thoughtful expression. The background is a library with bookshelves filled with books. The entire image has a warm, orange-toned overlay.

CONGRATULATIONS!
YOU'VE JUST
BECOME AN LMTA
LIBRARY USER!

**YOUR LMTA E-MAIL
(NAME.LASTNAME@STUD.LMTA.LT)
GRANTS YOU ACCESS TO:**

- LMTA library electronic catalogues
- online database subscriptions and other digital resources
- printing / copying / scanning device MyQ
- desktop computers at the library and Wi-Fi

**BORROWING
LIBRARY ITEMS**

You don't need to come to the library to search for publications. Instead, use the **LMTA digital library services**, the e-catalogue or the LMTA virtual library. To collect or return the borrowed items, use the LMTA Bookdrop.



If you have questions,
e-mail to **biblioteka@lmta.lt**

LMTA LIBRARIES

Central Library	Gedimino Av. 42, Vilnius, 3rd floor Open (during the academic year): Mon-Fri 9AM–5PM
Music Faculty	Vilniaus St. 6-2, Vilnius 3rd floor, Room 321 Open (during the academic year): Mon-Fri 9AM–5PM
Theatre and Dance Faculty	Kosciuškos St. 10, Vilnius, 3rd floor Open (during the academic year): Mon-Fri 9AM–5PM
Klaipėda Faculty	K. Donelaičio St. 4, Klaipėda, 3rd floor Open (during the academic year): Mon-Fri 9AM–4PM

Libraries are closed on last Friday of each month (Clean-Up Day)
Libraries close one hour earlier the day before a public holiday.

SPACES
FOR

Art Activities



SPACES FOR ART ACTIVITIES

ART EVENTS

The events take place in the halls of the LMTA Central Building in Vilnius (Gedimino Av. 42): the Grand Hall (3rd floor), Juozas Karosas Hall (2nd floor), Organ Auditorium (3rd floor), Balcony Theatre (2nd floor), Chamber Hall of the Congress Hall (Vilniaus 6-2), Study Campus (Olandų 21A) the Theatre, Cinema, and Dance Halls and in Klaipėda in the LMTA Klaipėda Faculty Hall (K. Donelaičio St. 4, 2nd floor). Innovative music and interdisciplinary art events can be often found in the Julius Juzeliūnas Spatial Sound Sphere (Central Building, 3rd floor).

LMTA IS AN ACTIVE CONTRIBUTOR TO THE WORLD OF THE LITHUANIAN CULTURE AND ART. BY ORGANISING CONCERTS, THEATRE, AND CONTEMPORARY DANCE PERFORMANCES, FILM SCREENINGS, FESTIVALS, INTERNATIONAL AND NATIONAL COMPETITIONS, LMTA IS BECOMING AN ALIVE AND VALUABLE PLATFORM FOR THE YOUNG TO EXPRESS THEIR CREATIVE ENERGY. IN TERMS OF ITS PRICCIPLES AND THE SCOPE OF ACTIVITY, THE ACADEMY IS SIMILAR TO LITHUANIA'S MAJOR PROFESSIONAL ART ORGANISATIONS.

LMTA art activities are organised by the Art Centre, which is set up in the LMTA Central Building (Gedimino Av. 42, 01110, Vilnius, Rooms 117A and 118).

Let's look for opportunities to become proactive together! The Art Centre is open to various proposals from the LMTA community members. If you have an idea for a cultural project and want to implement it but don't know where to start, or you need managerial or other support, e-mail us at menas@lmta.lt.

For more information about the Art Centre activities and the organisation of events, go to



LMTA | **Meno centras**

YOUR Career



KARJEROS IR
KOMPETENCIJŲ
CENTRAS



CAREER AND COMPETENCE CENTRE

ONE OF THE MOST IMPORTANT TASKS OF THE LMTA CAREER AND COMPETENCE CENTRE (KKC) IS TO HELP STUDENTS PREPARE FOR THEIR PROFESSIONAL CAREERS.

BEING AN ARTIST IS NOT ALWAYS EASY, THEREFORE THE CENTRE STRIVES TO PROVIDE AS MUCH PRACTICAL INFORMATION AND INSPIRATION AS POSSIBLE TO HELP DISCOVER ONE'S UNIQUE CAREER PATH, DEVELOP ENTREPRENEURSHIP AND SELF-MANAGEMENT SKILLS, FOSTER CREATIVE AND INNOVATIVE THINKING, AND NURTURE COLLABORATION.

KKC ACTIVITY

- announces volunteering, internship, and employment opportunities;
- organizes career development events – educational seminars, workshops, and meetings with Lithuanian and foreign artists;
- provides career consultations for students;
- conducts surveys, the results of which help improve study programs, monitor graduates' careers, and identify the demand for specialists.

Do you have any suggestions or ideas for a career event?

Give your suggestions here!

Do you have artistic ideas but don't know how to realize them? Or maybe you're at a crossroads and still searching for your path?

Sign up for an individual career consultation!

 **kkc@lmta.lt**

 **kkc.lmta.lt**

 **LMTA Karjeros ir kompetencijų centras**

LMTA STUDENT Accommodation

Students with no accommodation in Vilnius can stay in the LMTA dormitory at Giedraičių 57, Vilnius. To get your place in the dormitory, contact the dormitory supervisor and fill an application.

Contact:



Daiva Žukevičienė

+370 5 276 8249 , +370 699 54 767



daiva.zukeviciene@lmta.lt

More information:

<https://lmta.lt/lt/padaliny/bendrabutis/>



STUDENTS Union


THE LMTA STUDENTS' UNION IS AN ORGANISATION THAT UNITES STUDENTS AND STRIVES TO TURN THE STUDIES AT THE LMTA INTO A HIGH-QUALITY, CONSISTENT AND USEFUL PROCESS.



Students who have joined the LMTA Students' Union:

- protect the rights of the LMTA students;
- actively participate in the activities of the LMTA managing bodies;
- contribute to the improvement of the study environment and study process;
- organise events;
- develop and contribute to various projects;
- cooperate with students and organisations from other higher education institutions;
- take care of foreign students within international exchange programmes helping them to integrate into the LMTA community.

The President of the Student Union **Sofija Venskūnaitė**

 LMTA Students' Union can be found:
LMTA Building 2, Room 217

 **Imtasa@lmta.lt**
president@lmta.lt

 **Imtasa.lt**

STUDENTS UNION



LMTA Students' Facebook Group

LMTA MENTORS:

ŪLA PALIOKAITĖ (Kanklės M2)	ula.paliokaite@stud.lmta.lt
MIGLĖ BUTRIMAITĖ (Theatre Production B3)	migle.butrimaite@stud.lmta.lt
ROMUALDAS KARŽINAUSKAS (Saxophone B3)	romualdas.karzinauskas@stud.lmta.lt
KAJUS ORDA (Electronic Music B3)	kajus.orda@stud.lmta.lt
SOFIJA VENSKŪNAITĖ (Music Research B4)	sofija.venskunaite@stud.lmta.lt
DŽIUGAS ŠVEIKAUSKAS (Acting B4)	dziugas.sveikauskas@stud.lmta.lt
ANDRIUS DIRMANTAS (Cinematography B3)	andrius.dirmantas@stud.lmta.lt
SERAFIM TOMASZEWICZ (Sound Directing B3)	serafim.tomasevic@stud.lmta.lt
JUSTINA DIRGĖLAITĖ (Music and Education B3)	justina.dirgelaite@stud.lmta.lt
SERAFIM TOMASZEWICZ (Sound Directing B2)	serafim.tomasevic@stud.lmta.lt
MELITA SINUŠAITĖ (Film Directing B3)	melita.sinusaite@stud.lmta.lt
ARMINAS ABUKAUSKAS (Piano B4)	arminas.abukauskas@stud.lmta.lt

STUDENT

Support

E-MAIL INBOX FOR STUDENTS' QUESTIONS


LARYNGOLOGIST

SPIRITUAL GUIDANCE

PSYCHOLOGICAL SUPPORT


E-MAIL INBOX FOR STUDENTS' QUESTIONS

Students often have questions about studies, scholarships, various opportunities, or other questions that a lecturer, head of department head, or coordinator can hardly answer. If this is your case, send your question to the address below from your personal LMTA e-mail. You'll receive a reply within two working days.

 infostudentams@lmta.lt

LARYNGOLOGIST

Students can get help from the LMTA's laryngologist located on the Academy's premises. For many years now, doctor Austėja Pečeliūnienė has taken care of our singers' voices.

 austeja.peceliuniene@gmail.com

SPIRITUAL GUIDANCE

LMTA is a higher education institution with a long tradition, a school where you can get spiritual support.


Meet priest Dovydas Grigaliūnas, the LMTA chaplain, in person or contact him by e-mail.

 studentu.sielovada@gmail.com

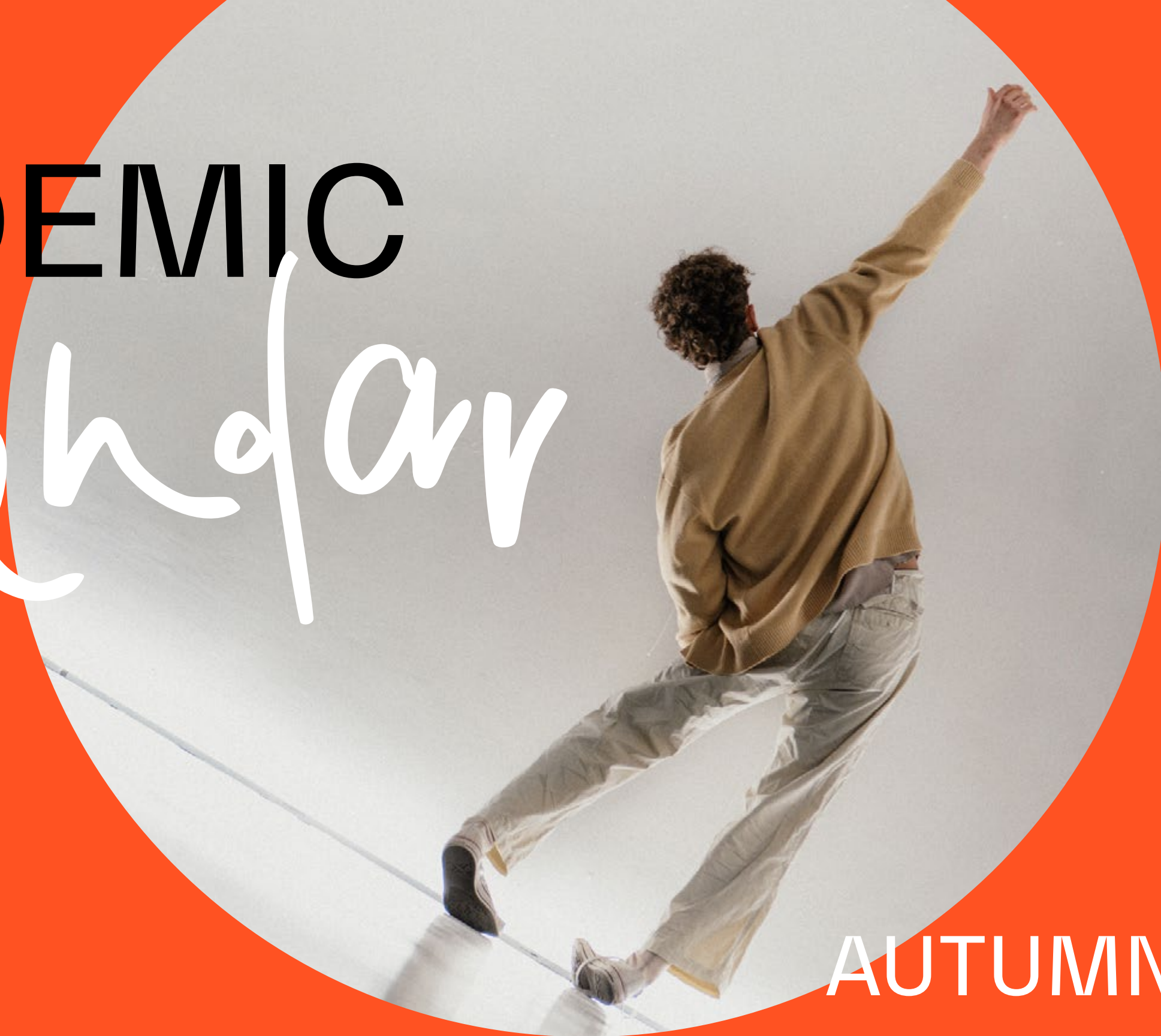
PSYCHOLOGICAL SUPPORT

The LMTA students have an opportunity to get support from a psychologist who can help to clarify, understand and solve personal or interpersonal conflicts and issues related to psychological well-being or behaviour.

Currently, two psuchologists work at LMTA – **Kristina Augutė** (in Vilnius) and **Gabija Sruogiūtė-Stašienė** (in Klaipėda).

 kristina.augute@lmta.lt
gabija.stasiene@lmta.lt

ACADEMIC *Calendar*



AUTUMN TERM

SPRING TERM

KEY DATES
FOR LMTA COMMUNITY

AUTUMN TERM 2025/2026



1 September	The beginning of the Autumn Term
1–12 September	Registration of first-year students for VU elective courses in the autumn semester of the 2025–2026 academic year
2 September	Information Day for first-year students
2–5 September	Outlining timetables for individual classes
October 28–November 7	Autumn Term interim tests
4–15 November	Symphony Orchestra Session for Students in Music Performance
12–19 November	Jazz Department Student Big Band Session
24–29 November	Orchestra Session of the Wind and Percussion Instruments Department Students
3–14 December	Registration of students for VU elective courses in the spring semester of the 2025–2026 academic year
24 December – 4 January	Christmas and New Year holidays
5–30 January	Autumn Term Examination Session
26–30 January	Academic debt settlement period
19–23 January	Registration of students for LMTA and VDA elective courses in the spring semester of the 2025–2026 academic year

SPRING TERM 2025/2026



2 February	Start of the spring semester
2–6 February	Additional student registration for remaining available places in LMTA, VDA, and VU elective courses for the spring semester of the 2025–2026 academic yea
16–21 March	Orchestra session of the Department of Wind and Percussion Instruments studentsa
17–26 March	Big Band session of the Jazz Department students
3–6 April	Easter holidays for students
7–18 April	Symphony orchestra session of Music Performance study programme students
7–23 April	Mid-term assessments of the spring semester; period for final semester course assessments of graduating students, elimination of academic debts, and completion of programme differences
3–14 May	Student registration for VU elective courses for the autumn semester of the 2026–2027 academic year
4–29 May	Final thesis defence session of graduating students
25 May – 19 June	Spring semester examination session
15–19 June	Period for elimination of academic debts of the spring semester examination session; student registration for LMTA and VDA elective courses for the autumn semester of the 2026–2027 academic year
19–30 June	Planned Bachelor’s and Master’s diploma awarding ceremonies
15 June – 31 August	Summer holidays for students

CONTACT



Central Building	Gedimino Av. 42, 01110 Vilnius	Security +370 521 25920
Building 2	Vilniaus St. 6-2, 01101 Vilnius	Security +370 526 17939
Building 4	T. Kosciuškos St. 10, 01100 Vilnius	Security +370 526 24491
Building 6	Pamėnkalnio St. 15, 01114 Vilnius	Security +370 524 97476
Study Campus	Olandų St. 21A, Vilnius	Security +370 661 41904
Klaipėda Faculty	K. Donelaičio St. 4, 92144 Klaipėda	Security +370 462 46348

LMTA

Accessories



PROUD OF BEING AN LMTA STUDENT AND WANT TO SHOW YOU BELONG TO THE ACADEMY'S COMMUNITY? GRAB HIGH-QUALITY LMTA ACCESSORIES AND CLOTHING!

LMTA Student Union merchandise is available at lmtasa.lt

+

LMTA Student's Guide, 2025

www.lmta.lt

Photos: Modestas Endriuška, Dmitrij Matvejev, LMTA archive



[lmta.lt](mailto:info@lmta.lt)



[LMTA Lietuvos muzikos ir teatro akademija](https://www.facebook.com/LMTA.Lietuvos-muzikos-ir-teatro-akademija)



[@lmta.lt](https://www.instagram.com/lmta.lt)



LITHUANIAN
ACADEMY OF
MUSIC AND THEATRE