



Freshman's
GUIDE
to the LMTA
2023/2024

Con- tents

- 3** Welcome from the LMTA Rector
- 4** The Lithuanian Academy of Music and Theatre
- 5** Structure
- 6** Art and Research
- 6** Vision and Values
- 6** Academic Ethics
- 7** Equal Opportunities
- 8** Symbols
- 9** Go Green Academy
- 10** Faculties and Departments
- 12** Student Account
- 13** LMTA Student Account Features
- 14** Student ID Card
- 15** Discounts for LMTA Students
- 16** Studies
- 18** Financing Your Studies
- 19** Opportunities for International Studies
- 20** Edina, LMTA Information System for Studies
- 21** Grants and Support
- 23** Library
- 25** LMTA Events
- 27** Your Career
- 29** LMTA Student Accommodation
- 30** Students' Union
- 31** LMTA Accessories
- 32** Student Support
- 34** Academic Calendar

Welcome from the LMTA Rector



Dear first-year students,

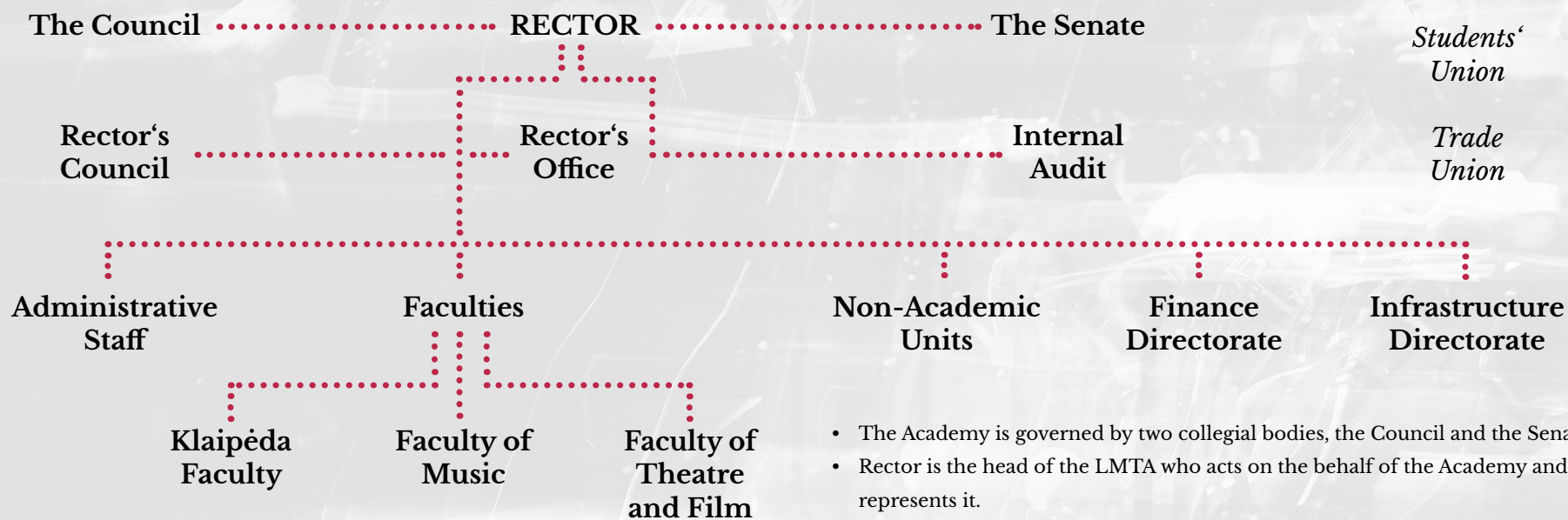
Welcome to the largest music, theatre, film, and dance university in the Baltic States! We're excited about every new student joining our community. I hope that at the Lithuanian Academy of Music and Theatre you will meet a lot of inspiring personalities – teachers and students – who will encourage you to discover your own path in life. I wish you to successfully overcome all the challenges and responsibly use all the opportunities offered by the LMTA. Here together we learn to discover and create art relevant to the world of tomorrow.

Assoc. Prof. Dr. Judita Žukienė
Rector of the Lithuanian Academy of Music and Theatre

The Lithuanian Academy of Music and Theatre

The Lithuanian Academy of Music and Theatre (LMTA) is a specialised art university whose mission is to ensure sustainable art and research activities, participate in the formation of Lithuania's policy of art education and culture, foster the spiritual harmony and national identity of the society, and educate young people with the most talent for art – young people who are creative, proactive, business-minded, and open to Lithuania and the whole world. In Vilnius and Klaipėda, the LMTA offers studies in music, theatre, film, dance, and art criticism as well as art and research activity in these fields. The LMTA has a staff body of 453 and about 1,000 students. Every year, about 100 foreign professionals arrive at the Academy to give lectures and workshops.

Structure



- The Academy is governed by two collegial bodies, the Council and the Senate.
- Rector is the head of the LMTA who acts on the behalf of the Academy and represents it.
- Vice-Rector is Deputy Rector of the LMTA.
- The LMTA has three faculties, an administrative unit, and other departments related to studies, arts, and research.
- The faculties have units – departments – responsible for conducting studies.

Art and Research

On average, the LMTA annually holds over 500 public art events: about 300 concerts, 170 theatre and dance performances, and 30 film screenings. Most of these events are free of charge and open to Vilnius residents and other guests of the city. Works by the Academy's researchers are published in three LMTA research journals and other periodicals.

Vision and Values

Vision

An open and creative academic art and research community that inspires cultural breakthroughs and creates value.

Values

- Openness and sustainability
- Creativity
- Identity
- Academic freedom
- Responsibility and tolerance
- Equal opportunities for all
- Integrity of the community

Academic Ethics

The activities of the LMTA academic community members are rooted in the principles of academic ethics: academic freedom, academic integrity, responsibility, collegiality and respect. As members of the LMTA community, students must cherish the principles of academic integrity.

The LMTA's Code of Academic Ethics establishes the principle of respect for intellectual property, according to which there is no tolerance of any form of academic miscon-

duct (plagiarism; falsification of scientific data; discrepancies in the allocation of credit to co-authors who are younger colleagues or subordinates; denial or non-acknowledgement of the contribution made by persons or organisations that have assisted the artistic, research, and social activity; copyright infringement; cheating at examinations and other tests; or other dishonest behaviour).

The regulations on academic ethics are outlined [in the LMTA's Code of Academic Ethics](#). Cases of alleged violations of the LMTA's Code of Academic Ethics are to be reported by e-mail etika@lmta.lt or submitted in writing to the Chairperson of the LMTA Ethics Committee.

Equal Opportunities

The Academy follows [the LMTA Policy of Equal Opportunities, Inclusion, and Diversity](#), the purpose of which is to ensure that all the LMTA activities comply with the principle of equal opportunities and the prohibition of restricting the rights of employees and students or granting privileges to them.

The LMTA seeks the compliance with the principles of equal opportunities, inclusion, and diversity in all areas of activity:

The LMTA recognises that every single person is individual and that the contribution and participation of each person – an employee or a student – in the activities of the LMTA community is equally important. The LMTA organises its activities so that all social groups are represented in its community and each member of the community feels respected and can perform to the best of their abilities.

The LMTA creates a community culture where differences are not only acceptable but appreciated; where everyone can work, study, develop, and express themselves. Individuals with fewer opportunities receive support to overcome obstacles and become involved in the activities.

The LMTA complies with the principle of equal opportunities, prohibits restriction of the students' and the employees' rights, grant of privileges to them, or discrimination based on gender, race, nationality, language, origin, social status, belief, convictions or views, age, sexual orientation, disability, ethnic origin, or religion, as well as discrimination on the basis of health status and different educational, cultural, economic, or geographical background.

Any LMTA employee or student who believes that their equal opportunities have been violated or that they suffer from discrimination have the right to contact the LMTA Ethics Committee by e-mail etika@lmta.lt and refer to a person who has allegedly violated their rights or discriminated them.

Sym- bols



LMTA LOGO

The logo has a shape of a shield: its upper part on the navy blue background contains the white capital letters LMTA, while the lower part depicts a lyre and a mask on the dark-red background.



RECTOR'S FLAG

The flag has a dark red background and depicts the LMTA shield-shaped logo held by two muses patronising art.

OFFICIAL COLOURS

Navy blue and dark red.

RGB colour values:

Navy blue – R-36 %, G-19 %, B-90 %

Dark red – R-144 %, G-42 %, B-49 %



Go Green Academy

Climate change and increasing environmental degradation pose an existential threat to the world. The LMTA encourages students not to stay indifferent and use the available resources in a responsible way: turn off the lights when leaving the room; avoid printing if there's a possibility to make a digital copy of the document; sort waste materials by placing them in the designated containers at the LMTA premises.





Fa- cul- ties

- Klaipėda Faculty
- Faculty of Music
- Faculty of Theatre and Film

Klaipėda Faculty

- Department of Music
- Department of Dance
- Department of Theatre

Dean

LORETA JONAVIČIENĖ

Administrator

Deimantė Žiulpienė



LMTA Klaipėda Faculty
(K. Donelaičio 4, Klaipėda)
Phone: +370 462 46302
E-mail: kf@lmta.lt
Rooms 214 and 302

Faculty of Music

- Department of Accordion
- Department of Interdisciplinary Piano
- Department of Choir Conducting
- Department of Vocal Performance
- Department of Conducting
- Department of Jazz
- Department of Ethnomusicology
- Department of Philosophy and Cultural Sciences
- Department of Piano and Organ
- Department of Languages
- Department of Chamber Ensemble
- Department of Composition
- Department of Accompaniment
- Department of Folk Instruments
- Department of Musicology
- Department of Pedagogy
- Department of Wind and Percussion Instruments
- Department of String Instruments

Dean

prof. DEIVIDAS STAPONKUS

Administrators

Deividas Bartkus

Asta Vaitkevičiūtė-Skliutė



LMTA Building 2
(Vilniaus 6-2, Vilnius)
Phone: +370 526 28537
E-mail: mf@lmta.lt
Rooms: 2216, 2218, 2220

Faculty of Theatre and Film

- Department of Film and Television
- Department of History and Theory of Art
- Art Management Division
- Department of Dance and Movement
- Department of Acting and Directing

Dean

ELONA BAJORINIENĖ

Administrator

Kristina Kazilionienė



LMTA Building 4
(T. Kosciuskos 10, Vilnius)
Phone: +370 526 12028
E-mail: tkf@lmta.lt
Rooms: 4202, 4203, 4204



Student Account

Each student at the Lithuanian Academy of Music and Theatre has a personal account at *name.lastname@stud.lmta.lt*. The account grants exclusive rights to access the LMTA electronic services. To log in to your account, go to *https://mail.lmta.lt*. You can find the account password in your personal e-mail inbox you specified when filling the application documents.

LMTA Student Account Features



IT-related information

www.pagalba.lmta.lt | pagalba@lmta.lt
+370 526 10028 | Mon-Fri 8AM–5PM

Video surveillance-related information

vaizdostebejimas@lmta.lt | +370 682 07816
Mon-Fri 8AM–5PM

* A **personal 50-GB** e-mail inbox: Here you'll receive messages from Dean's Office and the most important information related to your studies. You'll also use this e-mail for communication with your teachers.

* A possibility to print and make copies of documents in a high-quality format at non-commercial prices in all LMTA buildings, faculties, or departments. More information: <https://biblioteka.lmta.lt/en/services/copying-printing-scanning/>.

* Access to a universal charger for your mobile phone in all LMTA buildings (contact the security officer).

* A possibility to share very large files (up to 100 GB) at <https://filesender.vu.lt> (when logging in to the system, select "The Lithuanian Academy of Music and Theatre" in the field "institution").

* Free access to a secure LMTA VPN connection. More information: <http://instrukcijos.lmta.lt>.

* **Microsoft OneDrive cloud storage** with a capacity of **1024 GB** or **1 TB** to make sure your important data never disappears.

Use your phone for the two-factor authentication (2FA) ensuring the security of the account. To make the login process more convenient, we recommend using the free application *Microsoft Authenticator* which you can find in *Google Play* and *Apple Store*.

* Access to the major *Microsoft Office 365* applications in the browser (*Word, Excel, Powerpoint, Outlook, Calendar, OneDrive, Teams, Forms, OneNote, Visio, Sway* and others).

* A possibility to contact all LMTA students, teachers, and administrative staff using *Microsoft Teams* and *Outlook*.

* The exclusive opportunity to use *eduroam*, an international wireless network of academic institutions, available at the LMTA and universities in many countries around the world.

Student ID Card

To be referred to as a student, you must have a student ID card. At the moment, you can choose from either the Lithuanian Student Identity Card (in Lithuanian, LSP) or the International Student Identity Card (ISIC). Both ID cards:

- confirm your status as a student;
- provide discounts for students including public transport discounts;
- grant access to multiple LMTA services;
- allow to use integrated public transport ticketing.

To receive the Lithuanian Student Identity Card (LSP), sign up at www.lsp.lt/en. If you want to get the International Student Identity Card (ISIC), go to www.isic.lt/en.

Discounts for LMTA Students

LMTA students who have the Lithuanian Student Identity Card (LSP) are eligible for the following discounts:

1 PURCHASING SOFTWARE:


- 50 % on *Avid Technology Inc.* products *Sibelius* and *ProTools*
- 60 % on *MakeMusic Inc.* product *Finale*
- 40–50 % on *Steinberg GmbH* products *Cubase* and *Nuendo*
- 40 % on *Ableton AG* product *Ableton Live*
- 60 % on *Adobe Systems Incorporated* product *Adobe Creative Cloud*
- 50 % on *Resolume B.V.* product *Resolume*

2 PURCHASING AT MUSIC SHOPS:

- 10 % at *Tamsta* and *Tamsta profesionalas* shops
- 5-50 % at *Midiaudio* shops

3 EVENT TICKETS:

- Discounts on the ticket for concerts at *the Lithuanian National Philharmonic Society*
- 15% off the price for the performances of *the State Small Theatre of Vilnius* repertoire
- 50% off the ticket price for the *Klaipeda Drama Theatre* repertoire



Stu- dies

- First-cycle studies
- Second-cycle studies
- Third-cycle studies

Studies

The LMTA specialises in music, theatre, film, dance, and art criticism offering three-cycle studies. Now the LMTA is the only institution in Lithuania that provides university-level studies in the fields of film and dance, and art doctorate programmes in the fields of music, theatre, and film.

First-Cycle Studies

The first-cycle (bachelor's) study programmes aim at broadening general knowledge, acquiring theoretical basics of the field of study, and gaining professional skills necessary for independent work. These study programmes are oriented towards comprehensive education, acquiring theoretical knowledge and the highest level of professional skills. Students who have completed first-cycle university studies are awarded a bachelor's degree, which allows them to engage in professional activities and / or continue studies in a master's study programme.

The total volume of studies is 240 credits*.
The volume of one semester is 30 credits*.

Second-Cycle Studies

Second-cycle (master's) study programmes are intended to prepare for independent work in the fields of art or research or other kind of work that requires research-based knowledge and artistic, creative, and analytical skills. Students who have completed second-cycle studies are awarded a master's degree allowing them to engage in professional activities and / or continue studies at the doctorate level.

The total volume of studies is 120 credits*.
The volume of one semester is 30 credits*.

Third-Cycle Studies

Third-cycle studies at the LMTA are offered as the art doctorate and PhD studies. The art doctorate aims at training an artist

and researcher who can create, interpret, and develop research based on art practice. Students who have defended their artistic research project are awarded a doctoral degree in art. The purpose of PhD studies is to prepare a researcher who can independently conduct research and experimental (social, cultural) development work, and solve scientific problems. Students who have defended the thesis are awarded a PhD.

The total volume of studies is 240 credits*.
The volume of one semester is 30 credits*.

***Study credit – a unit of the volume of studies. It measures average workload of the student required to achieve the learning outcomes. At the LMTA, one credit equals 26.66 hours of the student's work and consists of contact (classroom) hours and independent work time. More information about study credits is provided in [the LMTA Regulations for Studies](#).**

Administration of Studies

The study process is administered by the staff of the faculties: deans, faculty administrators, heads and coordinators of departments.

Calendar and Timetables

Students can find the calendar and class timetables of their study programme (specialisation) on the LMTA website under the information published by the faculty.

- [LMTA Klaipėda Faculty](#)
- [LMTA Faculty of Music](#)
- [LMTA Faculty of Film and Theatre](#)

Suspension, Termination, and Resumption of Studies

If you have considered to suspend (go on academic leave), terminate, or resume studies, please contact Dean's Office of your faculty. More information can be found in the LMTA Regulations for Studies.

Surveys

To receive feedback, the LMTA periodically conducts stakeholder surveys, so you are invited to actively participate in them. Participation in surveys is voluntary and anonymous. The results of the surveys are used to update the curriculum, evaluate the teachers' performance, or review and update the study programme. The overall results of the surveys are discussed at meetings held by the Rectorate, deans, and departments. More information about surveys can be found at <https://lmta.lt/lt/kokybe/apklauso/>.

Financing your Studies

The LMTA has students whose studies are state-funded and those who finance their studies on their own.

Students whose first-cycle studies are state-funded continue receiving the state funding only if they meet the set achievement criteria after the assessment period established by the LMTA. If a student fails to meet the criteria of good academic achievements, they become deprived of state funding.

A student who has lost state funding must pay a fixed tuition fee for their studies, while the vacant state-funded place, in accordance with the procedure established by the LMTA, is taken by a student whose studies are not funded by the state and who has demonstrated the best academic achievements in the same field of studies and in the same course and meets the set learning performance criteria. The state-funded and non-state-funded places are ranked in accordance with the procedure established by the LMTA. For more information on study funding, see [the LMTA Academic Progress Policy](#).

Opportunities for International Studies

Whatever study cycle you are in (bachelor's, master's, or doctoral studies), the LMTA provides numerous opportunities for studies or a traineeship under the *Erasmus+* exchange programme. Studies within *Erasmus+* last from three to twelve months, while the duration of a traineeship is two months. To study under *Erasmus+*, you have to choose a foreign university with which the LMTA has signed a bilateral agreement.

It is allowed to study abroad more than once, but priority is given to students who have not yet participated in the *Erasmus+* exchange programme. Students who participate in the *Erasmus+* are awarded a grant. More information about grants and their rates is here: [LMTA | Erasmus studies.](#)



How to participate?

The selection of students for the *Erasmus+* exchange programme takes place **from 1 to 30 November.**

The *Erasmus+* traineeships take place **on October 1-31, January 1-31, March 1-31, and May 1-31.**

More information about participation in the *Erasmus+* exchange programme is here: [LMTA | Erasmus Traineeship](#)

The list of partner institutions is here: [LMTA | Erasmus partner institutions](#)



If you have questions,
e-mail erasmus@lmta.lt



[LMTA Erasmus+](#)

Edina, LMTA information system for studies

EDINA, the LMTA information system for studies, gives you access to the curriculum of your study programme (specialisation) and your grades; here, you can sign up for study subjects, request certificates (academic certificates, study-related certificates, etc.), communicate with your teachers, and receive relevant study-related information.

What is Edina?

EDINA (*Education Information Association*) is a complex of information systems which embraces the key elements of the higher education activities. *Oracle PeopleSoft Campus Solutions*, a business solution used for studies, is a universal product created to meet the needs of higher education institutions.

EDINA's major functional areas and modules include:

- Academia
- Admission of students
- Academic requirements
- Subjects and classes
- Groups of student record processes
- Student self-service
- Study funding
- Data analytics

More information about EDINA's functional areas and modules is available at <https://edina.lt/studijos-stud/>.

How to Log in?

You can log in to EDINA, the LMTA information system for studies, at <https://stud.edina.lt/>.

Steps to take:

- Select the language and click “Login”.
- Under the name of university, choose “Lithuanian Academy of Music and Theatre”.
- Log in with your personal LMTA e-mail address and password.
- If you don't have an LMTA e-mail address or forgot your password, send an e-mail to pagalba@lmta.lt.
- If you fail to login to the system, please inform by sending an e-mail to edina@lmta.lt.



Grants and Support

- LMTA merit-based incentives
- Tuition fee reduction
- State financial support

LMTA Merit-Based Incentives

An incentive grant (paid multiple times or once) is awarded to state-funded first- or second-cycle students to recognise their exceptional academic achievements, active artistic activity (participation in competitions, festivals, creative projects and / or managerial activity), research, and social activity. **More information about incentive grants can be found in the LMTA Regulations [for Merit-Based Grants](#).**

Well-performing first- and second-cycle students whose studies are not financed by the state are incentivised by the tuition fee reduction in accordance with the Description of the Procedure for Tuition Fee Payment, Refund, and Recovery at the Lithuanian Academy of Music and Theatre approved by the Senate (VII, 48.).

Tuition Fee Reduction

LMTA students whose studies are not funded by the state can receive reduction on the fee for the semester of study. More information about the tuition fee reduction is available in the Description of the [Procedure for Tuition Fee Payment, Refund, and Recovery at the Lithuanian Academy of Music and Theatre](#).

State Financial Support

- State loans. LMTA students can receive state loans to pay tuition fee, as well as cover living expenses or tuition fee for part-time studies.
- Social grants. Social grants are available to all LMTA first-, second-, and third-cycle students as long as they meet the established criteria.
- Reimbursement of the tuition fee. First- and second-cycle students whose whole study period or its part (a semester) has not been funded by the state are

eligible for reimbursement of the tuition fee. The tuition fee is reimbursed to students who have completed one year of studies and demonstrated exceptional academic achievements.

- Reimbursement of the tuition fee for students who have completed military service. The students who have completed permanent compulsory military service or basic military training and meet the established criteria are eligible for partial reimbursement of the tuition fee.
- Support for Lithuanian expatriates. The State Studies Foundation provides support to Lithuanian expats studying at the LMTA.
- Support for people with disabilities. Students with disabilities can get a targeted allowance to meet their special needs. If a student's studies are not state-funded, they can receive an allowance for partial reimbursement of the tuition fee. The LMTA Community Wellbeing Centre takes care of and provides advice to students with disabilities.

More information is available at www.vsf.lrv.lt, [LMTA | Neįgaliesiems](#).



Lib-rary

Congratulations!
You've just become an
LMTA library user!

LMTA Libraries

Your LMTA e-mail
(*name.lastname@stud.lmta.lt*)
grants you access to:

- LMTA library electronic catalogues
- online database subscriptions and other digital resources
- printing / copying / scanning device *MyQ*
- desktop computers at the library and Wi-Fi

Borrowing Library Items

You don't need to come to the library to search for publications. Instead, use the LMTA digital library services, the e-catalogue or the LMTA virtual library. To collect or return the borrowed items, use the LMTA Bookdrop.



If you have questions,
e-mail to biblioteka@lmta.lt



Faculty of Music

Vilniaus 6-2, Vilnius

3rd floor, Room 321

Open (during the academic year):

Mon-Fri 9AM–5PM



Central Library

Gedimino Av. 42, Vilnius, 3rd floor

Open (during the academic year):

Mon-Fri 9AM–5PM



Faculty of Theatre and Film

Kosciuškos 10, Vilnius, 3rd floor

Open (during the academic year):

Mon-Fri 9AM–5PM



Klaipėda Faculty Library

K. Donelaičio 4, Klaipėda, 3rd floor

Open (during the academic year):

Mon-Fri 9AM–4PM

Libraries are closed on last Friday of each month (Clean-Up Day)

Libraries close one hour earlier the day before a public holiday.



LMTA events

- Art events
- International events

LMTA Events

LMTA is an active contributor to the world of the Lithuanian culture and art. By organising concerts, theatre, and contemporary dance performances, film screenings, festivals, international and national competitions, LMTA is becoming an alive and valuable platform for the young to express their creative energy. In terms of its principles and the scope of activity, the Academy is similar to Lithuania's major professional art organisations. LMTA art activities are organised by the Art Centre, which is set up in the LMTA Central Building (Gedimino Av. 42, 01110, Vilnius, Rooms 1117A and 1118).

Art Events

Music events take place in the halls of *the LMTA Central Building* in Vilnius (Gedimino Av. 42): *the Great Hall* (3rd floor), *Juozas Karosas Hall* (2nd floor), *the Organ Hall* (3rd floor), as well as *the Chamber Hall* of the Congress Palace (Vilniaus 6-2). Innovative

and transdisciplinary art events can often be found in *Julius Juzeliūnas Spatial Sound Sphere* (LMTA Central Building, 3rd floor) and in *the Klaipėda Faculty Hall* (Klaipėda, K. Donelaičio 4, 2nd floor).

Staged performances take place in Vilnius at the *LMTA Balcony Theatre* (LMTA Central Building, 2nd floor) and *the Theatre Manufactory* (Slushko Palace, T. Kosciuškos 10), and in Klaipėda in the *Klaipėda Faculty Hall* (K. Donelaičio 4, 2nd floor).

Film events take place in Vilnius at the *LMTA Film Hall* (T. Kosciuškos 12, 3rd floor) and *Šoblė Film Club* (T. Kosciuškos 10, 1st floor).

Let's look for opportunities to become proactive together! The Art Centre is open to various proposals from the LMTA community members. If you have an idea for a cultural project and want to implement it but don't know where to start, or you need managerial or other support, e-mail us at menas@lmta.lt.

For more information about the Art Centre activities and the organisation of events, go to

[LMTA Art Centre](#)




[LMTA | Art Centre](#)

International Events

Every academic year, the LMTA organises teacher exchange and coordinates international projects in Lithuania and abroad. Annually, LMTA courses and workshops are run by approximately 100 lecturers and artists from all over the world. Students are encouraged to take an active part in master classes and / or act as observers.

Short-term mobility is a popular activity involving approximately 150 LMTA students each year. Most often, these are international intensive courses lasting a week or longer and held at the LMTA and partner foreign schools. During the intensive courses or other international projects, students are awarded study credits that count as an optional course of study. You can receive information about short-term study opportunities, options for intensive courses or other international projects at your department.

Participation in master classes and in international projects, too, gives bachelor students study credits that they accumulate in the internship portfolio towards the end of their studies.



Your Ca- reer

LMTA Career
and Competence
Centre

Career and Competence Centre

LMTA Career and Competence Centre is mainly responsible for developing and improving a unified and effectively functioning career monitoring system for LMTA students and graduates. The Centre plans, initiates, and organises career development events for LMTA students and graduates.

LMTA Career and Competence Centre:

- distributes invitations to festivals, competitions, and master classes;
- announces vacancies for internships and jobs;
- provides student counselling and free participation in the career management system (see more information at www.karjera.lt);
- prepares contracts for student internships;
- conducts surveys, the results of which help to improve study programmes, monitor the career of the graduates, and identify the need for specialists.



Do you have any suggestions or ideas for a career event? Need help or advice? We invite you to visit the Career and Competence Centre or contact us by e-mail kkc@lmta.lt



More about career opportunities <http://kkc.lmta.lt>

LMTA Student Accommo- dation

Students with no accommodation in Vilnius can stay in the LMTA dormitory at Giedraičių 57, Vilnius. To get your place in the dormitory, contact the dormitory supervisor and fill an application.



Contact:
DAIVA ŽUKEVIČIENĖ
(8 5) 276 8249

+ 370 699 54 767

daiva.zukeviciene@lmta.lt



Students' Union

The LMTA Students' Union is an organisation that unites students and strives to turn the studies at the LMTA into a high-quality, consistent and useful process.

The goal of the Union is to represent the interests of each student and solve arising problems. By representing the interests of students, the LMTA Students' Union aims to create the most favourable conditions for each student's development and takes care of fostering the student culture and community.

Students who have joined the LMTA Students' Union:

- protect the rights of the LMTA students;
- actively participate in the activities of the LMTA managing bodies;
- contribute to the improvement of the study environment and study process;
- organise events;
- develop and contribute to various projects;
- cooperate with students and organisations from other higher education institutions;
- take care of foreign students within international exchange programmes helping them to integrate into the LMTA community.



LMTA Students' Union can be found:

LMTA Building 2 (Congress Hall)



lmtasa@lmta.lt

president@lmta.lt

LMTA Acce- ssories

Proud of being an LMTA student and want to show you belong to the Academy's community? Grab high-quality LMTA accessories and clothing! You can buy them from the LMTA Students' Union (Vilnius 6-2, Vilnius, Room 217A).



Contact:

+370 603 82 197



lmtaatributika@gmail.com



Student Support

- E-mail inbox for students' questions
- Laryngologist
- Spiritual guidance
- Psychological support

E-mail Inbox for Students' Questions

Students often have questions about studies, scholarships, various opportunities, or other questions that a lecturer, head of department head, or coordinator can hardly answer. If this is your case, send your question to the address below from your personal LMTA e-mail. You'll receive a reply within two working days.



infostudentams@lmta.lt

Laryngologist

Students can get help from the LMTA's laryngologist located on the Academy's premises. For many years now, doctor Austėja Pečeliūnienė has taken care of our singers' voices



austeja.peceliuniene@gmail.com

Spiritual guidance

LMTA is a higher education institution with a long tradition, a school where you can get spiritual support.

Meet priest Dovydas Grigaliūnas, the LMTA chaplain, in person or contact him by e-mail.




studentu.sielovada@gmail.com

Psychological support

The LMTA students have an opportunity to get support from a psychologist who can help to clarify, understand and solve personal or interpersonal conflicts and issues related to psychological well-being or behaviour.



gabija.stasiene@lmta.lt



Academic Calendar

- Autumn Term
- Spring Term
- Key dates for LMTA community



Au- tumn Term

2023/2024

4 September

The beginning of the Autumn Term

5 September

Information Day for first-year students

4-8 September

Outlining timetables for individual classes

7 September

Deadline for registration for studies and signing up for optional subjects

16-27 October

Symphony Orchestra Session for Students in Music Performance

October 23–November 3

Autumn Term interim tests

18-22 December

Last week of classes; the beginning of the examination session

22 December

Deadline for graduation students to take/retake tests and settle academic debts or differences in curricula

25 December - 1 January

Christmas and New Year holidays

2-19 January

Autumn Term Examination Session

22-26 January

Academic debt settlement period

22-31 January 22-31

Student winter holidays



Spring Term

2023/2024

1 February

The beginning of the Spring Term

1-8 February

Outlining timetables for individual classes

7 February

Deadline for signing up for optional subjects

15 March

Deadline for graduates to submit the programmes of the final creative projects, titles of the theses

29 March - 2 April

Easter holidays

3-13 April

Symphony Orchestra Session for Students in Music Performance

15-26 April

Spring Term interim tests

26 April

Deadline for graduation students to take/retake tests and settle academic debts or differences in curricula

2-31 May

Final examination session for graduates

2 May 2-14 June

Final examination session for master's graduates in Film

20-24 May

The last week of classes; start of the examination session

27 May - 14 June

Spring Term Examination Session

17-21 June

Academic debt settlement period

17 June 17-30 August

Student summer holidays

Con- tact



Central Building

Gedimino Av. 42, 01110 Vilnius
Security (8 5) 212 5920



Building 2

Vilniaus 6-2, 01101 Vilnius
Security (8 5) 261 7939



Building 4

T. Kosciuškos 10, 01100 Vilnius
Security (8 5) 262 4491



Building 5

T. Kosciuškos 12, 01100 Vilnius
Security (8 5) 262 8128



Building 6

Pamėnkalnio 15, 01114 Vilnius
Security (8 5) 249 74 76



Klaipėda Faculty

K. Donelaičio 4, 92144 Klaipėda
Security (8 46) 24 63 48



Freshman's Guide to the LMTA, 2023
www.lmta.lt

Photos: Modestas Endriuska, Dmitrij Matvejev, LMTA archive
Compilation: Deimantė Kavaliauskaitė
Design: Vaiva Satkutė-Marozienė
Translation: Viltė Gridasova